

GOVERNMENT OF PAKISTAN  
PAKISTAN METEOROLOGICAL DEPARTMENT



# *Quarterly Drought Bulletin of Pakistan October - December 2024*



**National Drought Monitoring and Early Warning Centre**  
Post Box No. 1214, Sector H-8/2, Islamabad, Pakistan  
URL: <https://ndmc.pmd.gov.pk/new/>

## Table of Contents

<b>1. Introduction</b> .....	<b>3</b>
<b>2. Historical Background</b> .....	<b>4</b>
<b>3. Rainfall Distribution (October - December) 2024</b> .....	<b>5</b>
3.1 PMD Stations With Highest Rainfall .....	7
3.2 Maximum Length of Dry Spell .....	7
<b>4. Drought Products</b> .....	<b>8</b>
4.1 Standardized Precipitation Index (SPI).....	8
4.2 Cumulative Precipitation Anomaly (CPA).....	9
4.3 Soil Moisture Anomaly (SMA) .....	9
4.4 Water Level of Major Reservoirs) .....	10
<b>5. District-Wise Impact of Drought</b> .....	<b>11</b>
<b>6. Rabi Season Forecast of Mangla and Tarbela Dams (2024)</b> .....	<b>11</b>
<b>7. Crop Report</b> .....	<b>11</b>
<b>8. Recommendations</b> .....	<b>13</b>
<b>9. Acknowledgement</b> .....	<b>13</b>
<b>References</b> .....	<b>14</b>

## **1. Introduction**

Pakistan's latitudinal range contributes to significant variability in rainfall across different seasons. The country's climate exhibits a spectrum from arid to hyper-arid in its lower southern regions, while the northern half ranges from semi-arid to humid. Certain areas experience persistent dry conditions, rendering them vulnerable to drought throughout the year. Prolonged absence of precipitation can exacerbate these conditions, leading to widespread drought impacts. Historically, all provinces of Pakistan have grappled with significant drought events.

Apart from other natural disasters such as floods, cyclones, and earthquakes, drought sometimes get gradual onset and prolonged duration and sometime as a result of heat waves emerge as flash drought. Its effects are less immediately visible and can extend across vast geographical areas, impacting a larger population than other environmental hazards.

The Pakistan Meteorological Department (PMD) launched the National Drought/Environment Monitoring and Early Warning Centre (NDMC) in 2004-05, following the severe drought of 1999-2001. The primary objective of NDMC is to proactively monitor drought conditions nationwide and issue timely advisories.

The NDMC operates a central office in Islamabad, complemented by four Regional Drought Monitoring Centers (RDMCs) in Lahore, Karachi, Peshawar, and Quetta. These RDMCs serve as focal points for gathering, consolidating, and analyzing drought-related data from across the country. To enhance monitoring capabilities, Automatic Weather Stations (AWS) have been strategically installed, particularly in drought-prone areas. Accessing data from remote areas of the country has been significantly facilitated.

NDMC has also Ordinary Rain Gauges (ORG) network across the country covering most of the vulnerable districts in the four provinces, as illustrated in Figure-1.

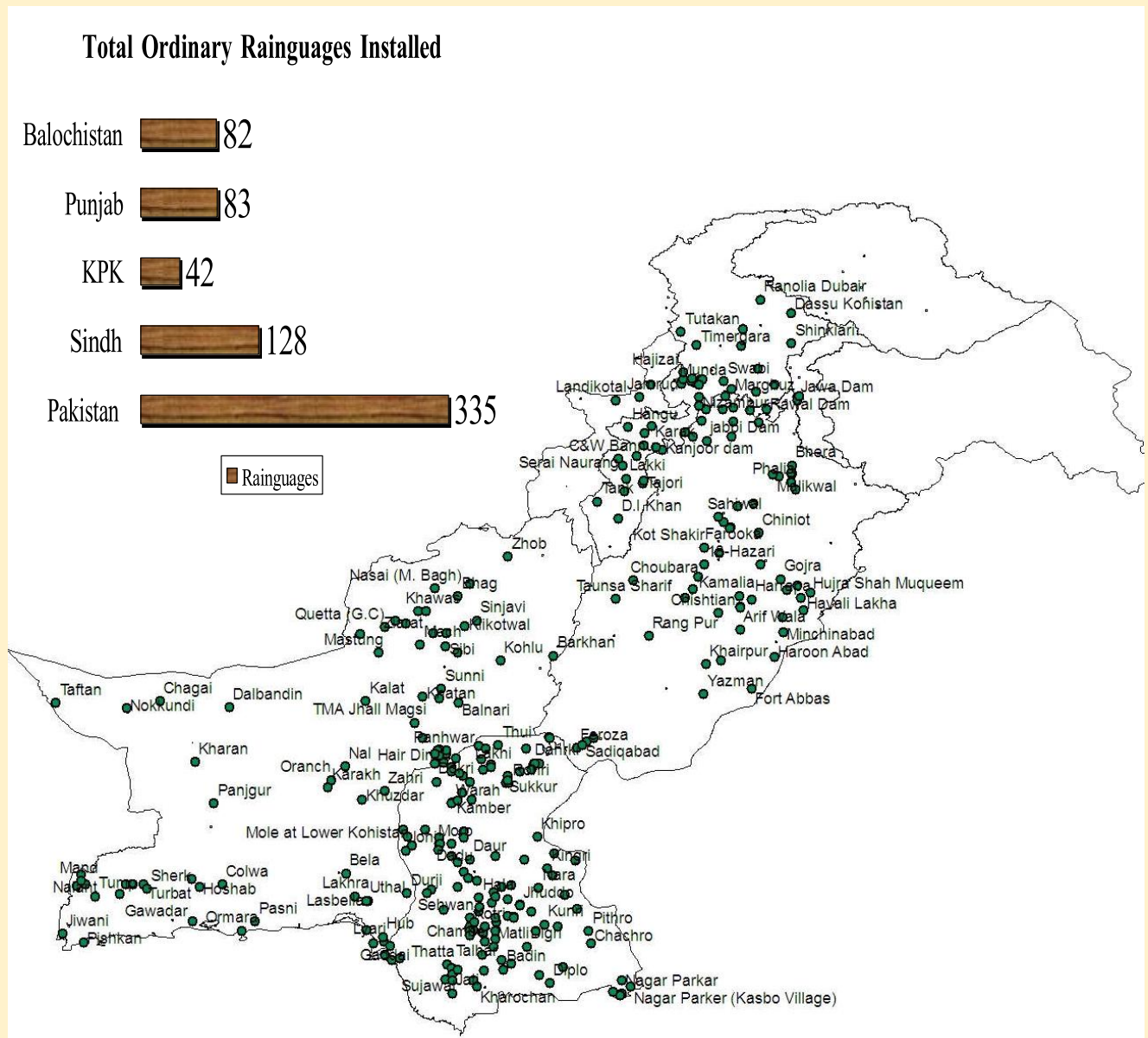


Figure-1: Rain-gauges network of Pakistan by NDMC

## 2. Historical Background

The Indian subcontinent experiences a tropical monsoon climate, characterized by significant fluctuations in rainfall both in quantity and distribution. Central to this climate are the regional and temporal shifts in atmospheric flow patterns associated with the monsoon. Two primary rainfall systems govern the region: the Southwest or Summer monsoon (from the end of June till September), and the Westerlies (from December to the end of March).

Pakistan, fortunately situated within this region, receives substantial rainfall during the summer months from the Southwest (SW) monsoon and in winter due to western disturbances. The summer monsoon contributes 65% of the annual rainfall in Pakistan from July to September (Waqas and Athar, 2019; Ullah et al., 2021b; Abbas et al., 2022). Monsoon rainfall varies widely across both space and time. Droughts in Pakistan primarily result from rainfall deficiencies associated with the southwest monsoon. Furthermore, there appears to be a correlation between El Niño and La Niña events and weakened monsoon activity.

Pakistan has witnessed several drought episodes with significant impacts across its provinces. The Punjab province experienced severe droughts in 1899, 1920, and 1935. North west of Khyber Paktunkhwa (KP) experienced worst droughts in 1902 and 1951, while Sindh endured notable droughts in 1871, 1881, 1899, 1931, 1947, and 1999. Among the most severe nationwide droughts were those in 1999–2000, extending into 2002. These droughts significantly affected agricultural output, with a notable setback during 2000–2001. Major crops experienced a decline of nearly 10% in growth, contributing to an overall negative growth rate of 2.6% for the agricultural sector. The water shortage persisted into 2001–2002, reaching levels of up to 51% below normal supplies, compared to 40% in the previous year (Shahid Ahmad, et al 2020).

Climate change has introduced fluctuations in rainfall patterns, leading to increased precipitation during wet periods and decreased rainfall during dry spells. Consequently, periods of reduced rainfall result in droughts, while heavy rainfall events lead to various types of floods, including flash floods, urban floods, coastal floods, and river floods

### **3. Rainfall Distribution (Oct-Dec) 2024**

During the Fourth quarter of 2024 (Oct-Dec), Pakistan experienced below-average precipitation, recording a decrease of -44.0%. October received significantly decreased rainfall, Specifically, Punjab, Sindh, and Baluchistan recorded below-average precipitation, with departures -40%, -12% and -66%, respectively, however, Khyber Pakhtunkhwa (KP), Kashmir and Gilgit Baltistan recorded above normal rainfall with departures 19%, 15% and 64%. In addition, November witnessed decrease in rainfall across all provinces with a departure range from -16% to -69% except Baluchistan. December witnessed below normal rainfall with -88% decrease in rainfall across Pakistan. Kashmir, Gilgit Baltistan, KP, Punjab, Sindh, Balochistan experienced a decrease in rainfall with departures -83.0%, -62%, -98%, -84%, -98% respectively.

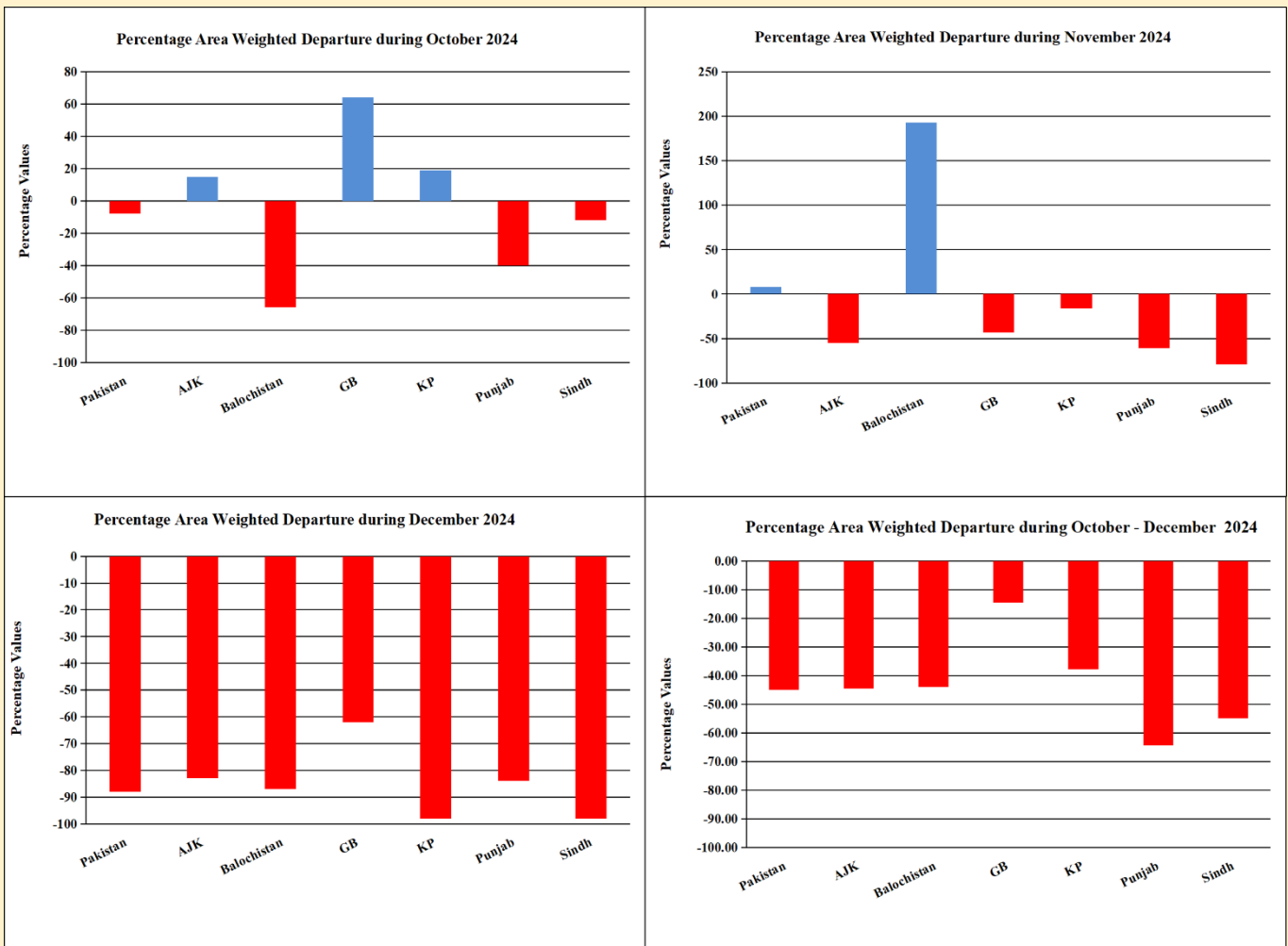


Figure-2: Percentage area weighted departure of rainfall during (October-December) 2024

Overall, the quarterly analysis indicates below-average rainfall across the country. The area weighted rainfall is depicted in Figure 2.

Spatial distribution of rainfall during the quarter (Oct-Dec) is shown in Figure 3a. During the quarter rainfall spells were observed throughout the country, principal amounts were observed in Upper KP (Hazara Division), Northeast Punjab, Northwest Baluchistan, Potohar region, Kashmir and adjoining areas of Gilgit Baltistan.

Overall, below normal rainfall was recorded during the quarter (Oct-Dec 2024) except isolated places like Astore, Skardu, Saidu Sharif, Barkhan and Khuzdar as shown in blue colors in figure 3b.

Below normal rainfall during October to December increased soil moisture deficit in drought vulnerable areas of Pakistan.

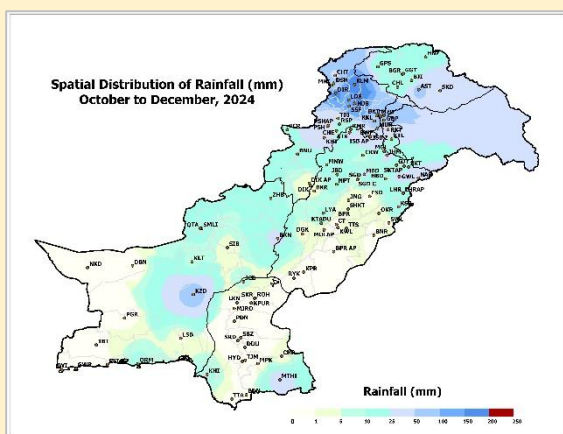


Figure: 3a

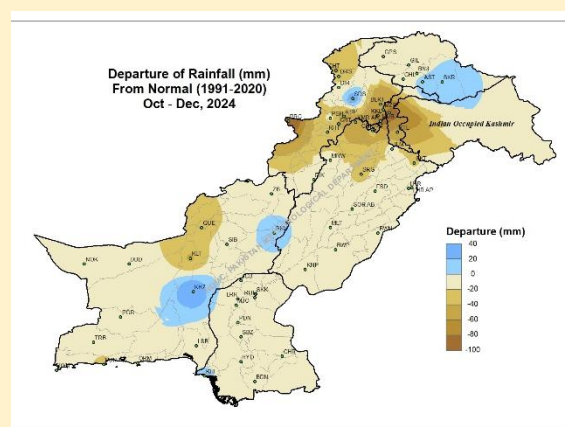


Figure: 3b

### 3.1 PMD Stations with highest rainfall (mm) (Oct to Dec 2024)

Rainfall Table (Oct to Dec 2024)					
S. No	Station	Rainfall (mm)	S. No	Station	Rainfall (mm)
1.	Kalam	193.5	11.	Astore	66.0
2.	Dir	185.5	12.	Kakul	62.2
3.	Malamjabba	171.0	13.	Mirkhani	60.2
4.	Saidu Sharif	140.0	14.	Drosh	55.8
5.	Pattan	114.0	15.	Murree	52.5
6.	Lower Dir	98.2	16.	Bacha Khan A/P	50.6
7.	Balakot	98.0	17.	Chaklala Airbase	50.0
8.	Muzaffarabad City	81.5	18.	Peshawar City	50.0
9.	Muzaffarabad Airport	76.4	19.	Peshawar Airbase	46.8
10.	Khuzdar	66.4	20.	G.Dopatta	44.4

### 3.2 The Maximum Length of Dry Spell

The consecutive dry days (CDDs) with rainfall less than 1.0 mm is shown in figure 4. Maximum length of dry days spell was experienced in western Baluchistan in Nokkundi (228) and Dalbandin (160).

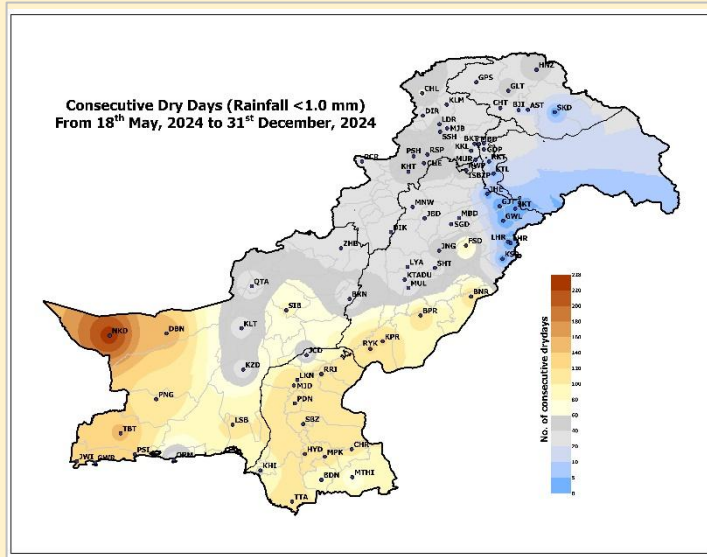


Figure-4: Maximum length of dry spell up to December 2024 in Pakistan

## 4. Drought Products

### 4.1 Drought Monitor

This drought monitor map (Figure 5) for December 2024 illustrates the varying degrees of drought severity across different regions of a country. Moderate Drought affects the areas marked as Nokundi and Dalbandin. Mild Drought conditions are spread across multiple areas of the country. Regions not affected by drought are marked as Normal and are indicated in white, mainly located in the northern and some central parts of the country.

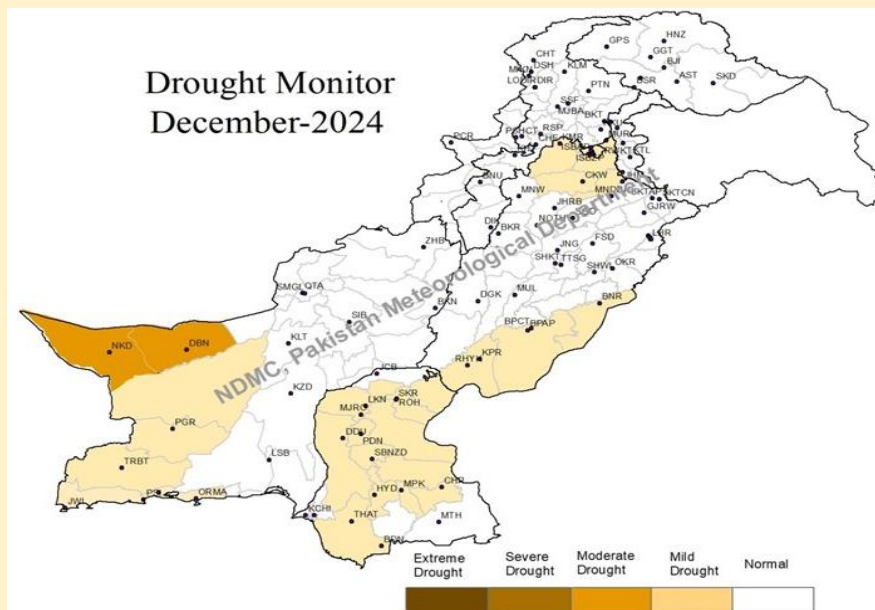


Figure-5: Drought conditions of Pakistan December 2024



## 4.2 Cumulative Precipitation Anomaly (CPA)

Cumulative Precipitation Anomaly (CPA) was calculated from for each month. October, November and December 2024 CPA maps are shown below in Figure 6. Overall, northern areas of the country and southern KP received below normal rainfall that is negative anomaly. However, central and southern parts of country have experienced positive anomaly that is above normal rainfall during the period.

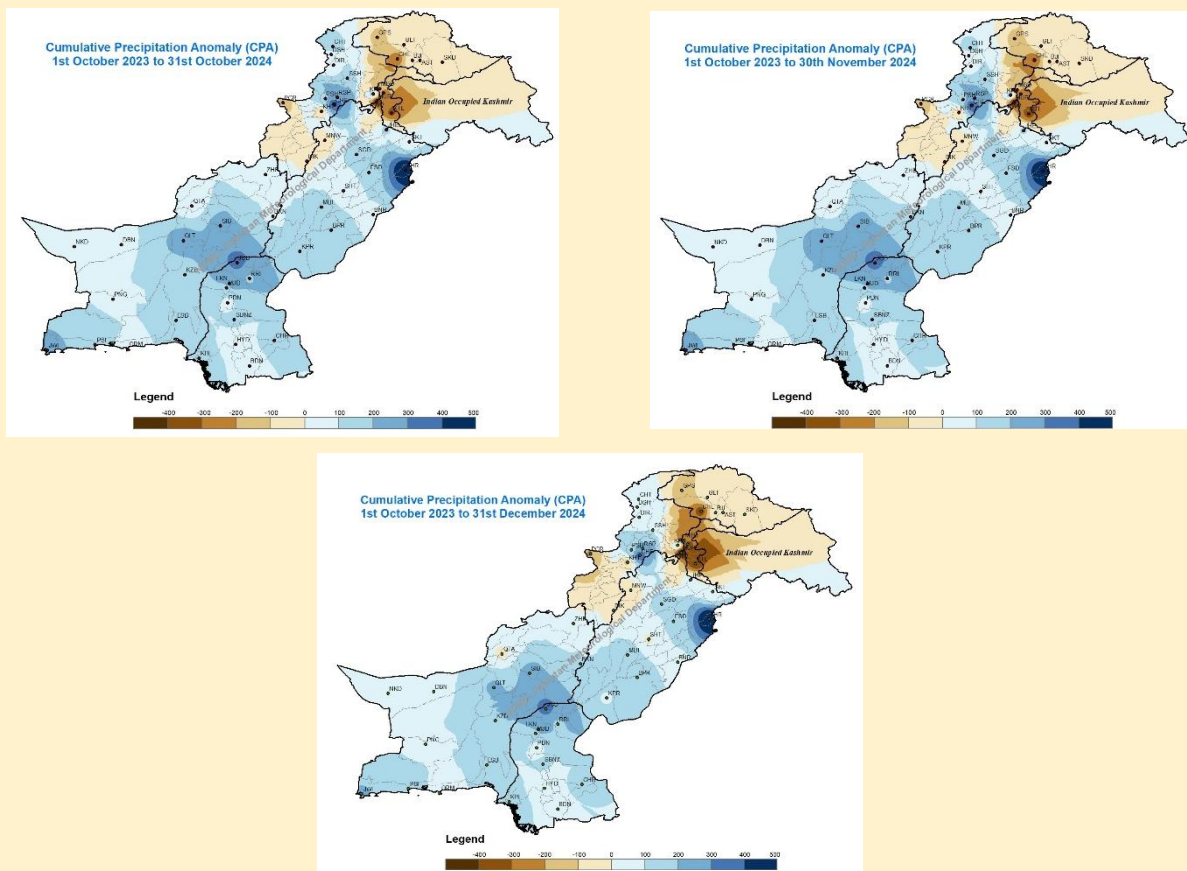


Figure-6: Cumulative precipitation anomaly during (Oct-Dec 2024) in Pakistan

## 4.3 Soil Moisture Anomaly (SMA)

It was observed that the amount of rainfall in some areas in the quarter was above normal which improved the soil moisture conditions in the country as shown in Figure 7. Soil moisture conditions are above normal in most parts of the country except Kashmir, Hazara division and Upper KP.

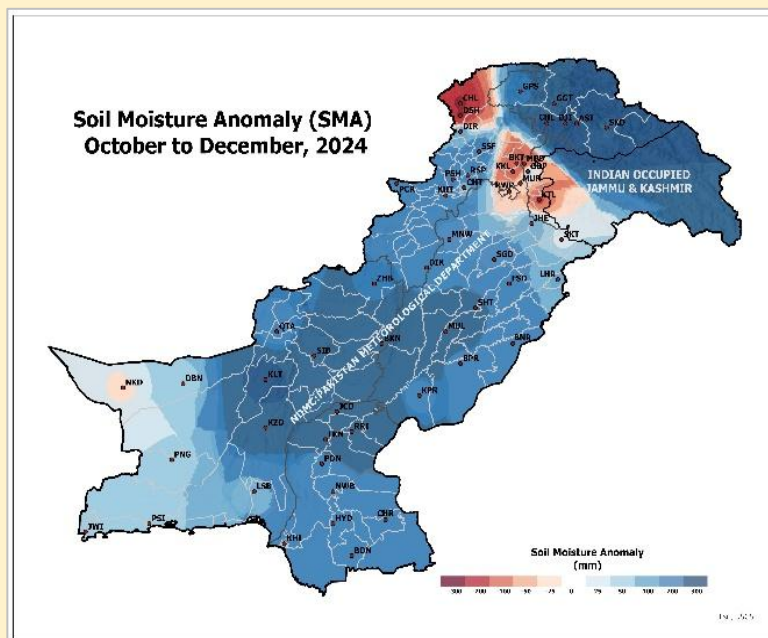


Figure-7: Soil moisture anomaly (Fourth Quarter)

#### 4.4 Water Level of Reservoirs

Pakistan has two main reservoirs of water in the form of dams i.e., Tarbela and Mangla. The dead level of Tarbela is 1402 feet while the maximum conservation level is 1550 feet whereas Mangla has a dead level of 1050 feet and a maximum conservation level of 1242 feet. Monsoon rains, along with the snow melting play an important role in the water levels of dams.

In addition, small dams in various parts of the country were also filled that would help boost agriculture and improve socio-economic activities in the country. The water level (%) of Tarbela dam in the month of December is above average, however, the water level (%) for Mangla is same as 21-year average.

The percentage of average water level from October to December 2024 calculated for both dams is shown below in Figure -7.

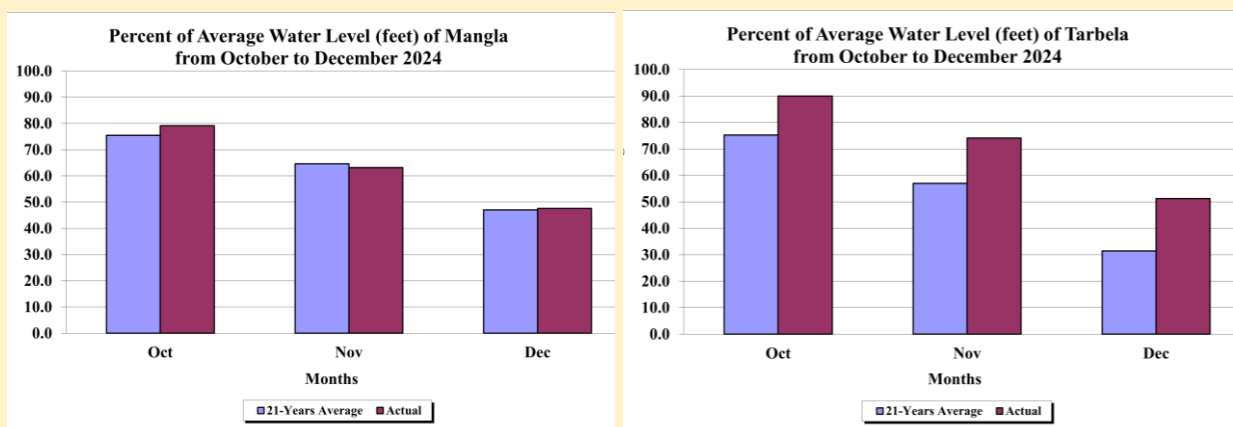


Figure-7 percent of the water level of Mangla and Tarbela during (Oct-Dec) 2024

## 5. District-wise impact of drought

During December mild drought like conditions were observed in western Baluchistan, Sindh, Southeast Punjab and Potohar region.

## 6. Rabi Season Forecast of Mangla and Tarbela Dams (2024)

The predicted water availability forecast (MAF) forecast in two big reservoirs i.e., Tarbela and Mangle during the Rabi season (October-March) is shown in Figure 9.

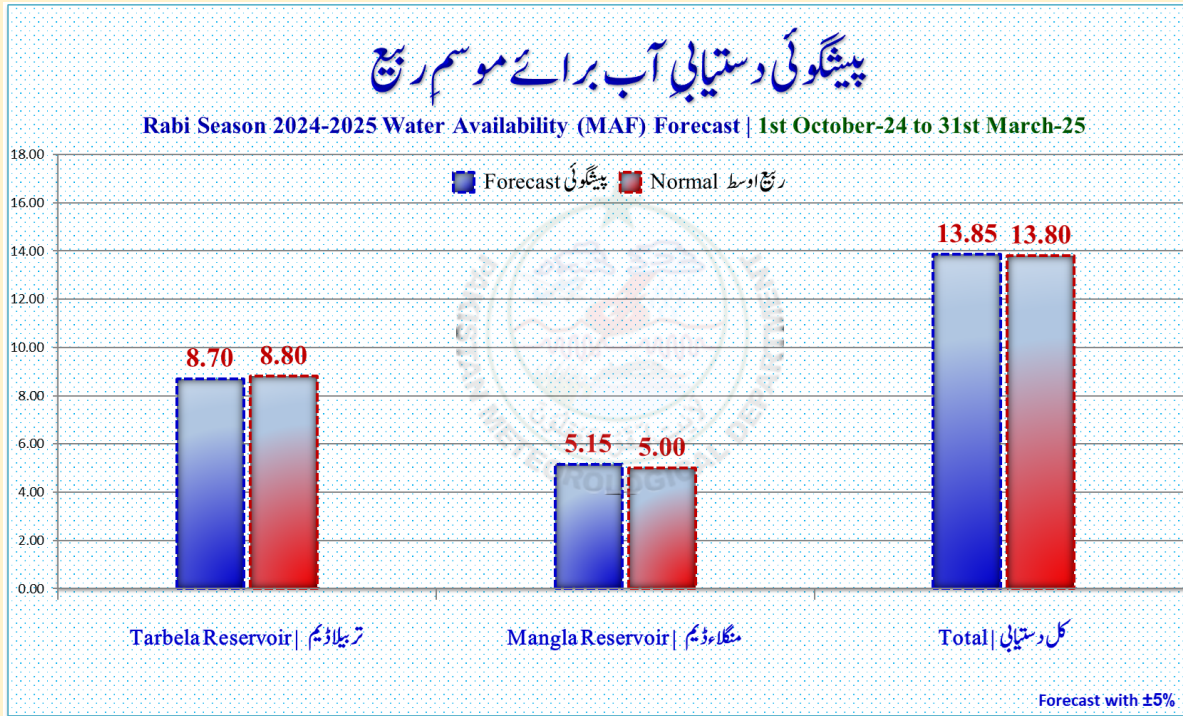


Figure-8 Rabi season forecast of Mangla and Tarbela dams

## 7. Crop Report: October-December 2024

### Punjab

From September to November 2024 in Punjab, the transition through the agricultural seasons was marked by the nearing harvest of cotton and the grain-filling of rice and maize, leading to their harvesting despite below-normal rainfall and moisture stress. Preparations for the Rabi season included sugarcane cutting and sowing of wheat and winter vegetables.

### Sindh

In Sindh, cotton reached the picking stage and rice was in the flowering to grain-filling phases, both requiring adequate moisture. The Rabi season saw the sowing of wheat and vegetables like onions, tomatoes, and cauliflower, though moisture stress was prevalent due to insufficient rainfall.

**Khyber Pakhtunkhwa**

Khyber Pakhtunkhwa experienced maize progressing from tasseling to grain-filling stages, with early varieties harvested and preparations made for wheat sowing. Cooler weather allowed for the sowing of vegetables and the harvesting of fruits like apples and pomegranates, supported by normal to above-normal rainfall.

**Baluchistan**

Baluchistan's agriculture involved the harvesting of fruits and the yielding of seasonal vegetables. Key Kharif crops like cotton and maize underwent crucial growth stages, with pulses like chickpeas and lentils prepared for Rabi sowing. Favorable rainfall in November supported the sowing of wheat, barley, mustard, and coriander.

**Gilgit Baltistan**

In Gilgit-Baltistan, maize advanced from tasseling to grain-filling, supported by adequate moisture. The growth of potatoes and pulses was strong, and fruits like peaches, cherries, and grapes were harvested, all benefiting from generally good rainfall conditions.

## **8.Recommendations**

A natural disaster could not be stopped. Each disaster gives us a lesson to do better planning, management and taking some precautionary measures to minimize its impacts in future. Following are some recommendations to cope with mild droughts conditions in Pakistan

- Pakistan dam's water storage capacity is much less than the neighboring countries like India. Therefore, it is the need of the hour to build large and small dams in catchment areas specially to conserve the rainfall water during the monsoon period.
- The stored water will help in protecting food security specially to fulfill the water requirements of crops during drought periods in the country.
- NDMC is continuously monitoring drought situations over the country and keeping the stakeholders and general public updated by issuing drought information on weekly, monthly and Quarterly basis.
- Over the past three months, below-normal rainfall led to mild meteorological drought conditions in various regions across Pakistan. Notably, consecutive dry days peaked at 228 in Nokundi, Balochistan, and at least 110 in Shaheed Benazirabad, Sindh, and Bahawalnagar, Punjab. The conditions are prevalent in the rainfed areas and most districts within Sindh and Balochistan, with mild conditions also observed in Punjab's Potohar region and adjacent areas.
- For detailed information regarding the drought situation in Pakistan, please visit <http://www.ndmc.pmd.gov.pk/index.htm>

## **9.Acknowledgement**

National drought monitoring Centre, Pakistan Meteorological Department, Islamabad acknowledges SUPARCO and, NOAA for sharing the information.

## References

- Shahid Ahmad, Zahid Hussain, Asaf Sarwar Qureshi, Rashida Majeed and Mohammad Saleem, (2020). Drought mitigation in Pakistan: Current status and options for future strategies.
- Waqas, A., and Athar, H. (2019). Spatiotemporal variability in daily observed precipitation and its relationship with snow cover of Hindukush, Karakoram and Himalaya region in northern Pakistan. *Atmos. Res.* 228, 196–205. doi: 10.1016/j.atmosres.2019.06.002
- Adnan, S., Ullah, K., Shuanglin, L., Gao, S., Khan, A. H., & Mahmood, R. (2017). Comparison of various drought indices to monitor drought status in Pakistan. *Climate Dynamics*, 1-15.
- Adnan, S., Ullah, K., Khan, A.H., Gao, S. (2017). Meteorological impacts on evapotranspiration in different climatic zones of Pakistan. *Journal of Arid Land*, 9(6): 938–952. [https://doi.org/ 10.1007/s40333-017-0107-2](https://doi.org/10.1007/s40333-017-0107-2)
- Adnan, S., Ullah, K., & Shouting, G. (2016). Investigations into Precipitation and Drought Climatologies in South Central Asia with Special Focus on Pakistan over the Period 1951– 2010. *Journal of Climate*, 29(16), 6019-6035.
- Adnan, S., & Ullah, K. (2015). Characterization of drought and its assessment over Sindh, Pakistan during 1951–2010. *Journal of Meteorological Research*, 29(5), 837-857.
- Azmat H 2007; Drought Monitoring in Pakistan using satellite and ground data. M.S thesis 2007, Comsats University, Islamabad-Pakistan.
- Edwards, D.C.; and T. B. McKee. 1997. Characteristics of 20th century drought in the United States at multiple time scales. *Climatology Report Number 97–2*, Colorado State University, Fort Collins, Colorado. FAO report available on web at [www.fao.org/news/story/en/item/89752/icode/](http://www.fao.org/news/story/en/item/89752/icode/).
- McKee, T.B.; N.J. Doesken; and J. Kleist. 1993. The relationship of drought frequency and duration to time scales. Preprints, 8th Conference on Applied Climatology, pp. 179–184. January 17–22, Anaheim, California. <http://www.suparco.gov.pk/pages/pak-scms.asp>.